

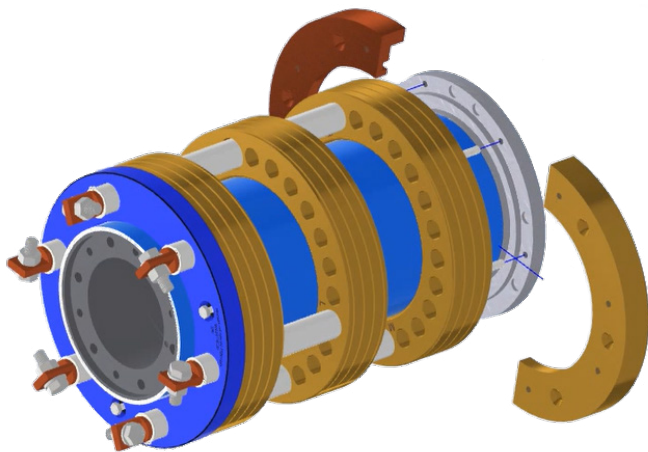
Morgan Segmented Ring Technology (SRT)

Up-Tower Replaceable Ground Ring Segments

Coollest Blue™ Just got Cooler!

Background: Ground ring grooving is pervasive on some applications due to arcing between the brush to ground ring interface. Costly WETA card failure is often a side effect causing additional down time and added parts expense. Up-tower machining can be done but only when time, tooling, and wind conditions allow, and then only once, the result is costly replacement of the entire collector ring assembly.

Morgan SRT solution: Ground ring segments can now be quickly replaced in-situ! Savings are HUGE in time, materials, and significant reduction of lost production revenue.

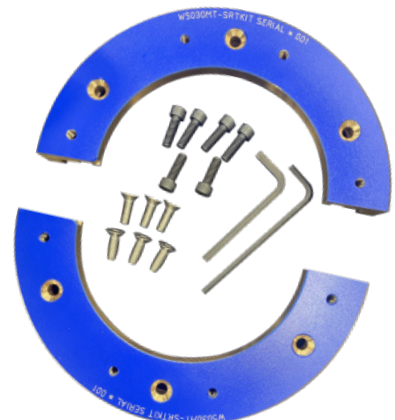


W61075030MT-SRT

Key Benefits

- Ground ring can be replaced up tower without having to remove/reinstall the whole collector ring assembly, thereby saving turbine downtime and costs and enhancing safety.
- Thoughtful design features that assure concentricity and performance of the collector ring assembly while permitting ease of installation/removal of the segments.

**SRT has Coollest Blue™ technology
with addition of up-tower replaceable ground ring!
Replacement segment kits available.**



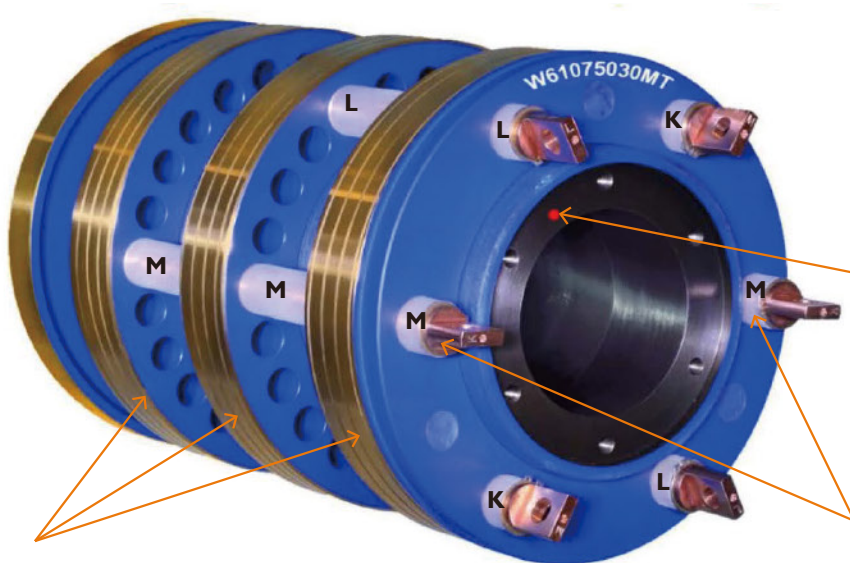
Morgan All Bronze Slip Ring W61075030MT

Proprietary insulation materials - higher dielectric strength, higher temp, non-stick
Ring width increased 20% and cooling holes added for better heat transfer



0.5mm
larger OD
adds life

Spiral groove pitch
matched to brush size



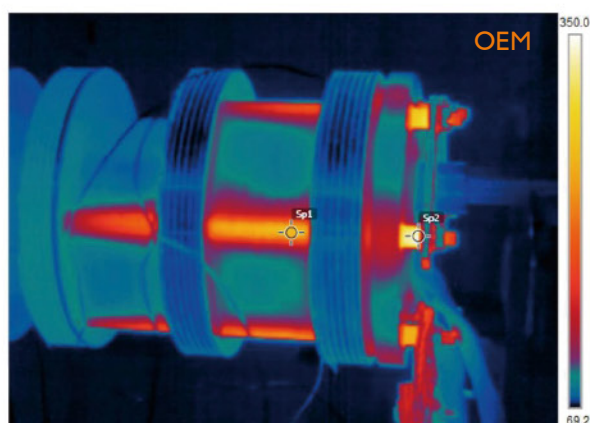
184 lbs
(83.5 Kg)

95% larger
stud diameters

Added keyway
reference

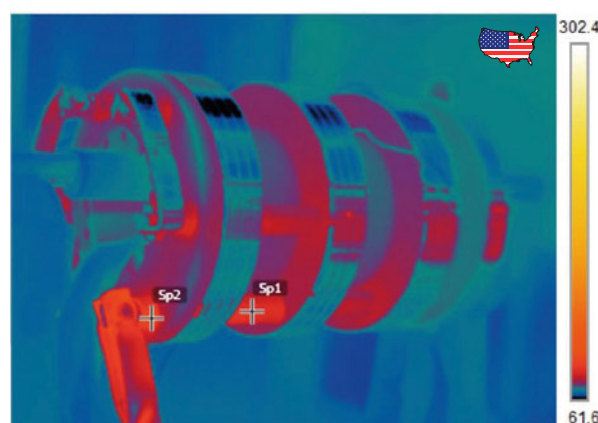
Studs located 180° for
balance & heat
dissipation

Wider Rings (49mm) - Increased Thermal Mass - Cooler Running



Measurements **Red Hot**

Sp1	284.4 °F
Sp2	346.5 °F



Measurements **Coollest Blue**

Sp1	92.9 °F
Sp2	102.6 °F